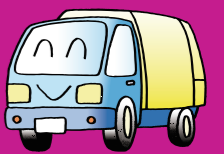


# How to separate garbage

Take the garbage out on the day of collection!

Take the garbage out by 8:30 in the morning!!  
Take the garbage to your designated garbage collection point!!



The separation listed below is an example. If you have any questions, please contact the City Office: 079-552-6253 (direct communication). Alternatively, please contact the cleaning center: 079-596-0844.

Garbage that can be brought to a garbage collection point

**White designated garbage bag**

**Burnable garbage**

plastic products

- Plastic buckets / washbasins
- Plastic toys
- CDs/DVDs
- Cassette tapes
- Video tapes
- Helmets
- Straws
- Polypropylene band (packing band)
- Any lacquerware / wooden tableware
- Kitchen garbage such as leftovers and used tea leaves
- Shells from eggs and seafood
- Cooking oils such as tempura oil
- Paper diapers
- Cloth waste/rags
- Leather products such as shoes/bags
- Disposable lighters
- Weeds and fallen leaves

**change bag**

If you cannot remove dirt from an item, please dispose of it together with burnable garbage.

**Pink designated garbage bags**

**Plastic container packaging**

Put plastic products into burnable garbage bags.

Plastic bags like those from supermarkets

Do not make double bagging, such as putting another bag of plastic containers and packages into a bag.

Plastic containers such as those used for cup noodles, /desserts

Plastic bags used for sweets/clothing, etc.

Containers used for sauces /shampoos, etc.

Egg /tofu packaging, etc.

Plastic trays used for fish /meat/prepared dishes

Press through packs of medicine tablets

Empty the contents before putting them into garbage bags.

If you cannot remove all the dirt, please place the item together with the burnable garbage.

Please dispose of vinyl string/lace together with burnable garbage.

**Green designated garbage bags**

**Plastic PET bottles**

**PET**

Only those with this recycling mark are eligible

Plastic PET bottles

Remove caps and labels.

Empty the contents.

Rinse with water.

Caps and labels are to be disposed of with the plastic container packaging garbage.

**Green designated garbage bags**

**Metals**

Knives

Razors

Knives, kitchen knives, etc

Saws

Wrap the blade with paper such as newspaper and clearly indicate "刃物あり"

Label it on the designated bag in the same way.

Kitchenware

Frying pans

Stove kettles

Pots

Thermos flasks

Wire nappings

Aluminum kitchenware

Metal caps

18-liter square cans

Portable cooking stoves

Small electrical products

Personal computers

Rice cookers

Electronic pots

Toasters

Small radios

Hairdryers

Clothes irons

Electric blankets

Metal fittings / metals

Dry batteries

Coin batteries

Umbrellas

Metal hangers

Clocks

**Green designated garbage bags**

**Cans / bottles**

Put cans and bottles together into a garbage bag without sorting them.

Empty cans

Cookie cans

Spray cans / cassette cylinders

In a well ventilated area away from the risk of fire, please puncture with a hole and release gas.

Bottle of juice

1.8L na bottle at bottle of beer

Whiskey bottles / wine bottles / energy drink bottles

Empty the contents and remove caps and plugs.

Wash out inside.

You can also put out at recyclable garbage collection sites.

1800cc bottles, beer bottles, etc. are also collected by brewers.

Please return them to the shop purchased, if possible.

Cosmetic bottles and containers

Empty the contents of the bottles.

**Yellow designated garbage bags**

**Landfill waste**

Glass pieces / heat-resistant glass

Wrap in newspaper and clearly indicate "ガラスあり" on the garbage bag.

Light bulbs / fluorescent lights / lighting tubes

Fluorescent lamps are also collected at the recyclable garbage collection point.

Bowl / glass cup

Bottles and containers of agrochemicals, etc.

Empty the contents of the bottles.

**Recyclable garbage collection (Local garbage collection point)**

Please cooperate with the recyclable garbage collection conducted by the PTA / Children's Association

- Newspapers
- Magazines
- Empty cans
- Cardboard
- Rags
- Bottles

**Recyclable garbage collection (Administrative collection)**

2nd Wednesday of every month (3rd Wednesday if a national holiday falls on the 2nd Wednesday)  
(From 7:00 to 10:00, but the cleaning center is from 8:30 to 10:00)  
In front of the second government building of the City Office / In front of each branch office / Cleaning Center

- Newspapers (including advertisements and flyers)
- Magazines
- Cardboard (Each tied with vinyl string)
- Paper (paper containers, wrapping paper, paper boxes, etc. labelled with the ♻️ mark)
- Bottles (brown, transparent, green) (wash inside)
- Fluorescent lights
- Dry batteries and coin batteries
- Mercury thermometers
- Mercury sphygmomanometers
- Mercury cooking oil
- Tempura oil: Please remove any solids from the oil
- Limited to vegetable oils
- Limited to household oils
- Cost: Free of charge (Only when placed at the collection point)

**Recyclable miscellaneous paper collection box (permanent location)**

Provided in front of No.2 Building of the City Hall and at each branch office.

- Wrapping paper
- Miscellaneous paper and envelopes
- Paper boxes, etc.

**Items that can be brought to the Public Health Division / Cleaning Center counter.**

- Mercury thermometers
- Mercury sphygmomanometers
- Thermometers (mercury meters)

Do not mix with other garbage.

Oversized garbage (2nd Wednesday of every month) (Fee payable)

**Household appliances** Up to 50kg (Limited to garbage that can be loaded on a light truck)

- Microwaves
- Stereos
- Fan heaters
- Gas stoves

**Oversized garbage**

- Galvanized steel sheets (1 item consists of up to 3 sheets)
- Clothes poles (1 item consists of up to 3 poles)
- Table and chairs (a set of them is counted as one piece)
- Dressers
- Sofas (a set of them is counted as one piece)
- Bed (including mattress)
- Futon / blanket (up to 3 sheets)
- Those with wheels up to the size of an ordinary car They cannot be brought directly to the Cleaning Center.
- Waste tires
- Bicycles and Electric-assisted bicycles (electric charger also acceptable)

**Disposal of commercial garbage**

Commercial garbage will not be collected. Please bring it directly to the cleaning center.

**You can also bring them directly to the Cleaning Center.**

**Procedures for oversized garbage collection (Please apply in advance)**

**Application**

- Apply to the city office or a branch office by 17:00 2-days before the collection date (5 days before if 2-days before falls on a national holiday)

**Purchase a sticker (1,100 yen)**

- Purchase a sticker at the city office of a branch office before the collection date. No refunds permitted for cancellations.

**How to dispose of oversized garbage**

- Put a sticker on the oversized garbage and leave it in front of your home by 8:30 on the day of collection. (No need for the owner to be present)

**Garbage not processed at the center**

**Products subject to the Home Appliance Recycling Law**

- Please refer it to the store it was purchased. (with fee)
- TVs (Analog / Flat screen)
- Washing machines
- Clothes dryers
- Refrigerators / Freezers
- Air conditioners

**Medical garbage**

- Please return to the doctor or clinic. Never mix medical garbage with garbage to be collected.
- Drip equipment
- Syringes
- Gas cylinders
- Chemicals (including agricultural chemicals)
- Oils and fats for machinery
- Any home-use electric appliances that contained Freon and other refrigerant gas

**Carcasses of large animals such as pets**

- Please bury your pet. Contact the animal cemetery or Municipal funeral hall.
- Municipal funeral hall TEL 079-590-8200

**Fire extinguishers**

- Small-sized rechargeable batteries (secondary batteries)
- Secondary battery carries the marks shown below.
- Waste tires / Automobile parts

**[Notes]**

- Please cut following items into the designated size.
- Wooden Over 10cm thick
- Over 1.5m long
- Bamboo / PVC pipes Over 50cm long
- Tatamis are accepted up to 5 pieces per day.

**TambaSasayama City Cleaning Center Information Map**

**TambaSasayama City Cleaning Center**

**Garbage opening hours (weekdays)**

9:00 to 11:45  
13:00 to 16:00

**Price list**

Center delivery	Type	Unit	Amount of money	Sales office	
City designated garbage bag	Household	per 10kg	90yen	City Offices, each branch office, city supermarkets / convenience stores / home centers / privately-owned Stores, etc.	
	Business	per 10kg	150yen		
	Bicycles	per bicycle	550yen		
Oversized garbage	Motorbikes (up to 50cc)	per motorbike	2,150yen	City Office, each branch office	
	Burnable garbage (Large)	White	10 bags		450yen
	Burnable garbage (Small)	White	10 bags		300yen
	For plastic containers and packaging	Pink	10 bags		450yen
Oversized garbage	For recyclable garbage	Green	10 bags	450yen	
	Landfill waste	Yellow	10 bags	450yen	
Oversized garbage	Sticker	1 item	1,100yen	City Office, each branch office	

Information on how to dispose of garbage is also provided on the Tamba Sasayama City Cleaning Center website.

たんばささやませいそうせんたー 丹波篠山市清掃センター 検索

**How to dispose of garbage <Rules>**

- Use the designated garbage bag. (Limited to items that fit in the bag)
- Write your name on the bag. • Garbage should not weigh over 10kg.
- Separate your garbage properly. \* Items that violate these rules cannot be collected.

Burnable garbage

Metals

Landfill waste

Cans and bottles

Plastic PET bottles

Plastic items

Burnable garbage and plastic bottles